

14. June 2021

Roundtable "Future of Eldercare", Healthcare Denmark

Department of Care for the Elderly and Disabled, Aalborg Municipality, Denmark – "Eldercare, present and future"

Head of Office, Louise Weikop
Special Advisor, Bent Sørensen

Unit for Quality and Innovation



Aalborg – the third largest municipality in Denmark

- Approximately 215,000 inhabitants – population growth (1%)
- Attractive city for students - more than 40,000 students enrolled:
- Strong health cluster
- 19,000 municipality employees
- Denmark's leading city for conventions
- International airport – 1.5 million passengers yearly
- A healthy economy



A photograph of a caregiver with short red hair, wearing a light blue t-shirt and a denim vest, assisting an elderly man. The man is seated on a grey sofa, wearing a light-colored cardigan over a striped shirt and khaki trousers. The caregiver is holding the man's hand, possibly helping him stand or move. In the background, there is a framed painting of a coastal scene with cliffs and a boat. To the right, a floor lamp with two adjustable shades is visible. On the left, a wooden cabinet holds various items, including a lamp with a copper-colored shade. In the foreground, a coffee table holds a remote control, a telephone, and some papers.

Our vision

Together we break the boundaries for the development of future welfare

Our task

We further the potential of people to live an independent life, through development, support and care

Our values

Presence, responsibility and respect

A Few Facts

Budget:

- 403.400.000 EUR (2021)

Employees:

- 6,400; nurses, therapists, social and health care staff, pedagogues, nutrition assistants, and (technical) support/administration

Locations:

- 150, Nursing homes (39) (including specialized nursing homes), medical clinics, rehabilitation centres, temporary nursing care, activity centres, emergency call center, and center for assistive technologies

Services 365/24/7:

- Nursing home care, residential care (own home, nursing care and personal and practical help), training and rehabilitation, dementia care, food service (production and delivery)



**Aalborg
Kommune**
Vi udvikler **velfærd** sammen

As a dynamic, agile and decisive organization we have a focus on

- Welfare innovation; we seize new opportunities to make a difference for people (and their mental health)
- Co-creation; we stand stronger when all relevant parties are involved in developing welfare
- Rehabilitation; we provide care and support, develop skills and social relations, promoting the independent life of people (also furthering their mental health)



14. June 2021

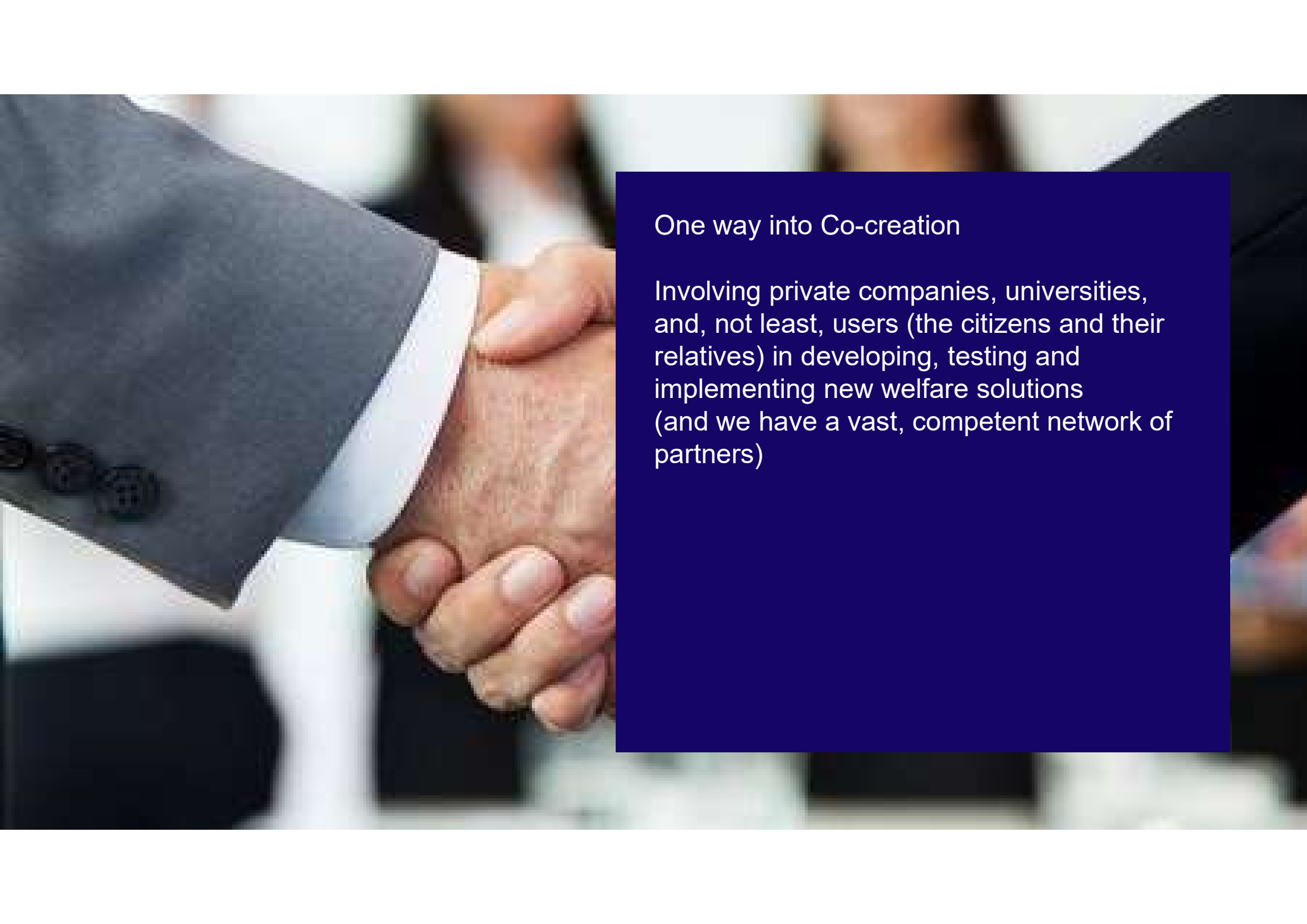
Roundtable "Future of Eldercare", Healthcare Denmark

So how do we do it ?

One way into welfare innovation – using both mechanical technologies and digital, intelligent solutions

- Ceiling hoist systems in nursing homes and residential care
- Douche toilets in nursing homes
- VR rehabilitation
- Digi-Rehab (iPad training in own home)
- Home monitoring
- Digital tracking (Otiom, Dementia Care)
- Digital, integrated medication administration (TIM)
- Home care visits via iPads
- Social robots





One way into Co-creation

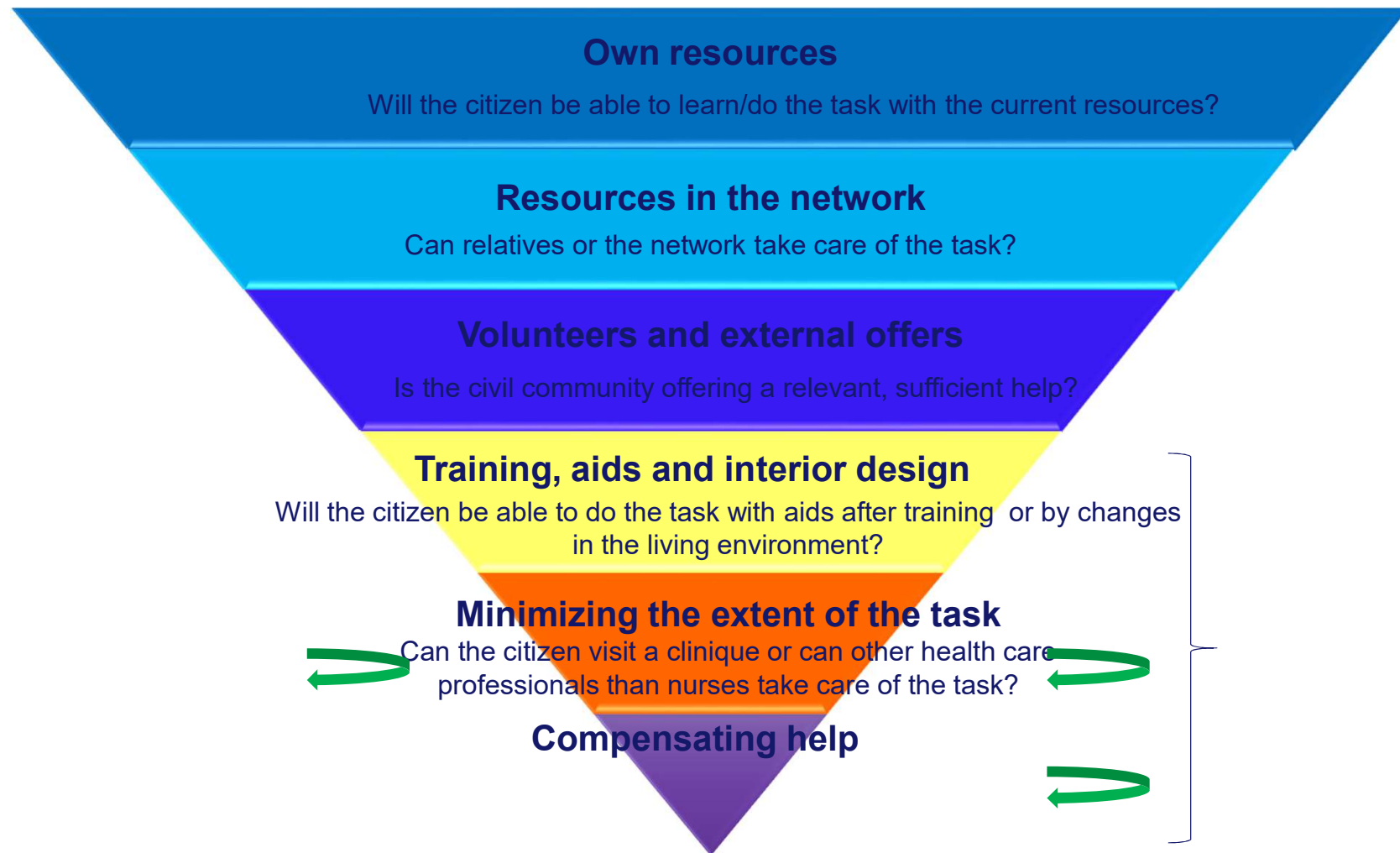
Involving private companies, universities, and, not least, users (the citizens and their relatives) in developing, testing and implementing new welfare solutions (and we have a vast, competent network of partners)

One way into rehabilitation

- We are focusing on training before offering care services
- We understand the citizen as a having a potential (no matter how small)
- We are defining the goals together with the citizen
- We are involving the citizen (and his/her relatives) through the process
- We are standing together with the citizen (and his/her network) (presence, responsibility and respect)
- We invest in the citizen



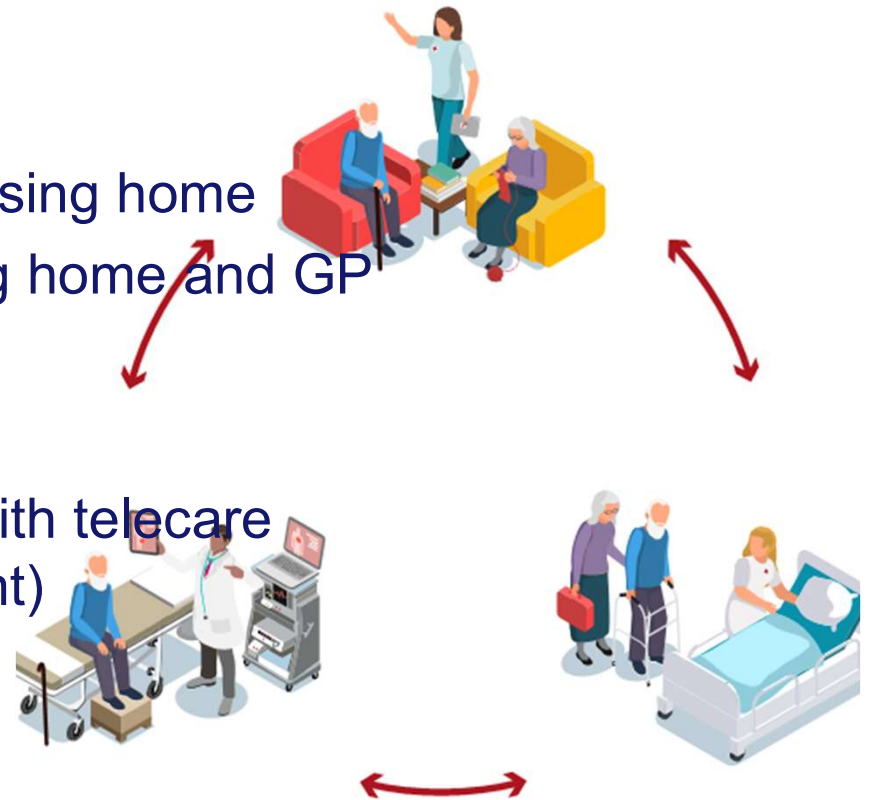
Rehabilitation – the "hopper"



Improving coorporation between hospital, municipality & GP

Examples of joint efforts:

- one appointed GP associated with every nursing home
- agreements of coorporation between nursing home and GP
- prevent overtreatment in the last time of life
- prevention of re-admissions of frail elderly
- move care from hospital to a home setting with telecare solutions (COD, heart-failure, wound-treatment)



Our welfare innovation, Co-creation and rehabilitation, also, point toward, a focus on mental health, furthering the feeling of

- Independence (e.g., TIM, digital home care visits)
- Involvement (e.g., digital home training)
- Safety/security (e.g., ceiling hoists, digital monitoring (dementia))
- Dignity, privacy (e.g., douche toilets, smart floors)
- Self-determination
- Activeness (rehabilitation)
- Continuity

Etcetera...



We evaluate our welfare innovation, Co-creation and rehabilitation from four perspectives

- The life quality of the citizen
- The work processes of the healthcare professionals (e.g., working environment)
- Cost efficiency
- Sustainability



Thank you for the attention!

